

The information contained in this document belongs to the business secrets of ECOVACS Group and is protected by copyright. Unauthorized reproduction, distribution or use of any part of this document for other purposes are prohibited.

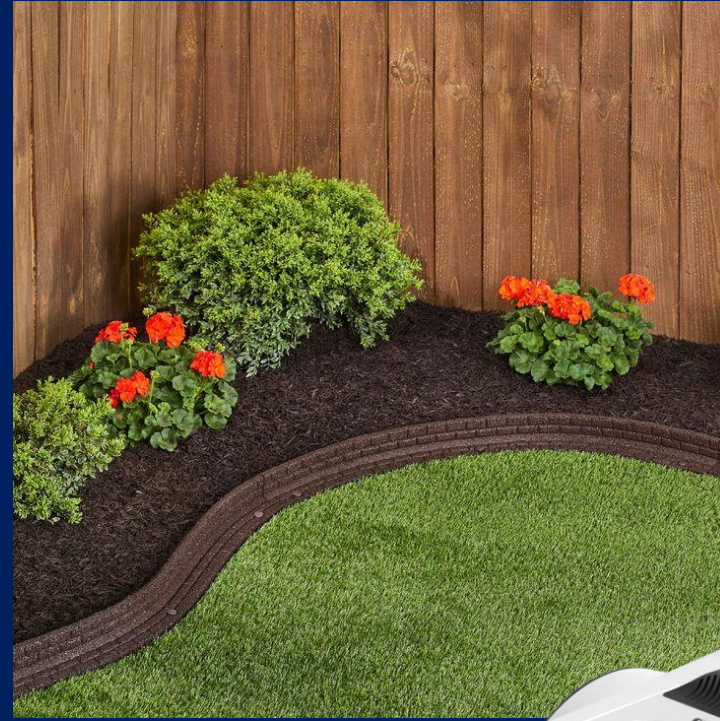
本文件所含信息属科沃斯集团商业秘密并受版权保护，未经授权禁止复制、传播或将本文件的任何部分用于其他目的。



# ECOVACS GOAT 2026 Introduction



Prepared by EMEA GTM Sep.2025



The brand new  
**GOAT A PRO & O PRO**

*Conquer the space, honor the details.*



The  
Revolutionary  
Robotic Lawn Mower with  
Fully Autonomous  
String Trimmer



# TruEdge Trimmer

Empowered by **T**ruEdge Technology

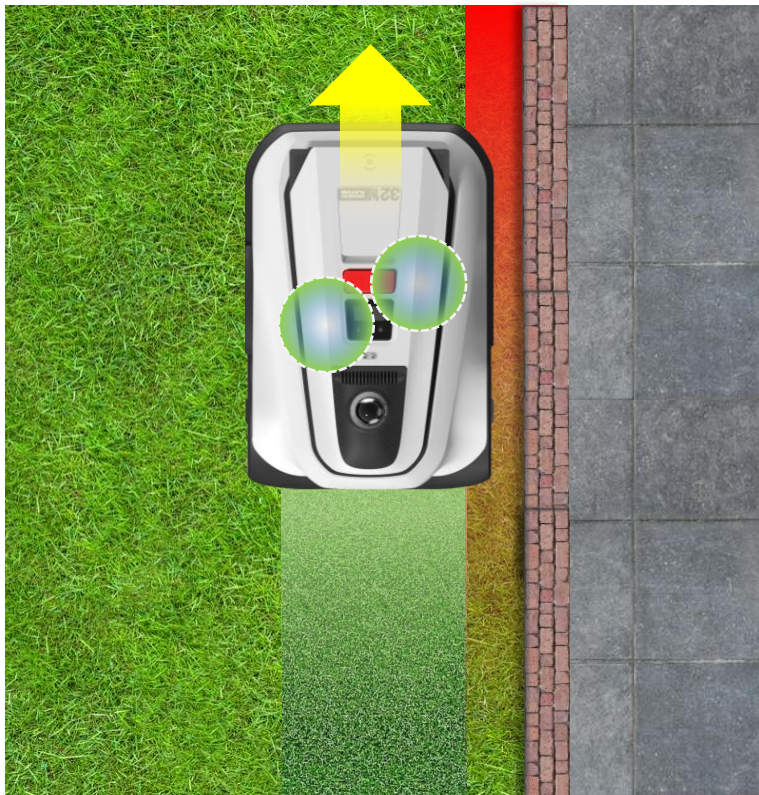
- ✓ Fully autonomous trimming
- ✓ No human following required
- ✓ Automatic string release
- ✓ Automatic retraction
- ✓ Automatic stop on encountering human and animals



# Limitations of mowing the edge

TruEdge Trimmer  
Fully Automated String Trimmer

✗ The current gen robotic mowers are not able to reach the very edge of unpassable boundary



⚠ Users have to manually trim the edge with string trimmers



# How does TruEdge Trimmer work



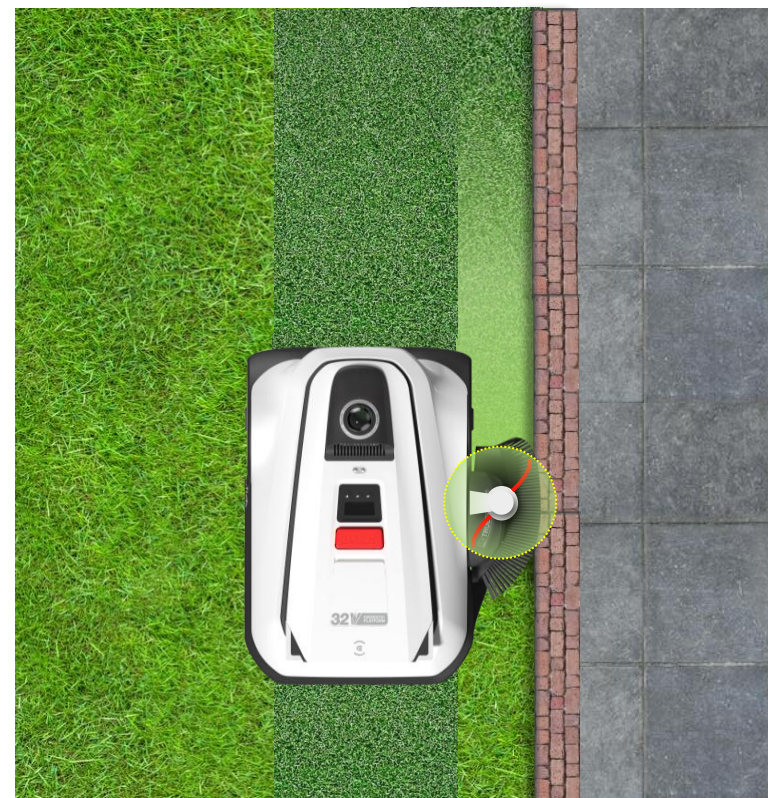
1

1. Mow the edge with blades in Auto or Area mode



2

2. Trim the uncut gap with TruEdge Trimmer in Trim mode



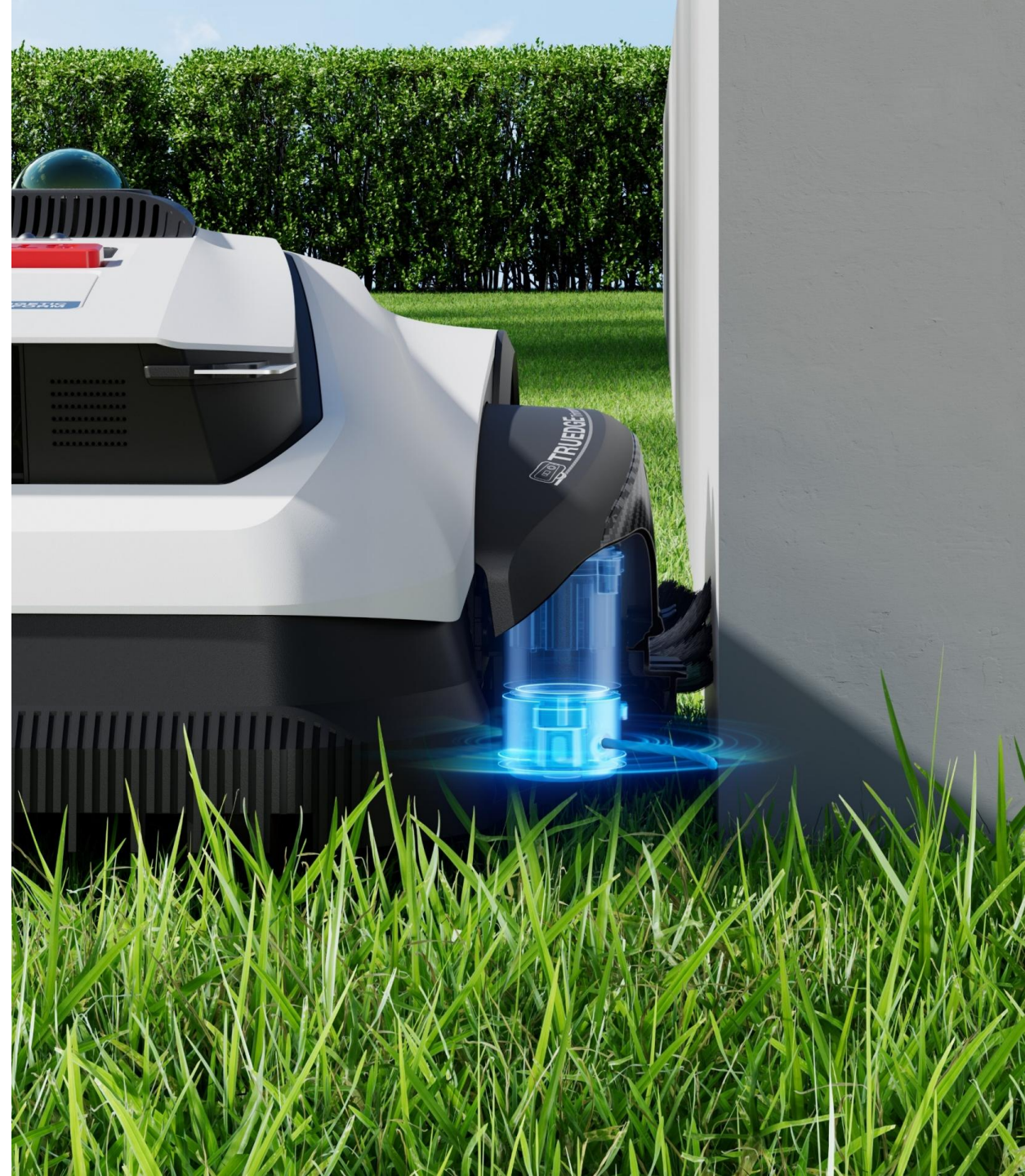
# TruEdge Trimmer

Fully Automated String Trimmer

# TruEdge

## Consistent Edge Mowing

- ✓ New TruEdge Trimmer for full edge coverage  
(Only Available for GOAT A & O Series PRO)
- 0.05m original blade-to-edge distance (suitable for all edges and cutting heights) (Only Available for GOAT A)
- Automatic zero-edge cutting
- Stable edge navigation with Dual-LiDAR / Augmented RTK



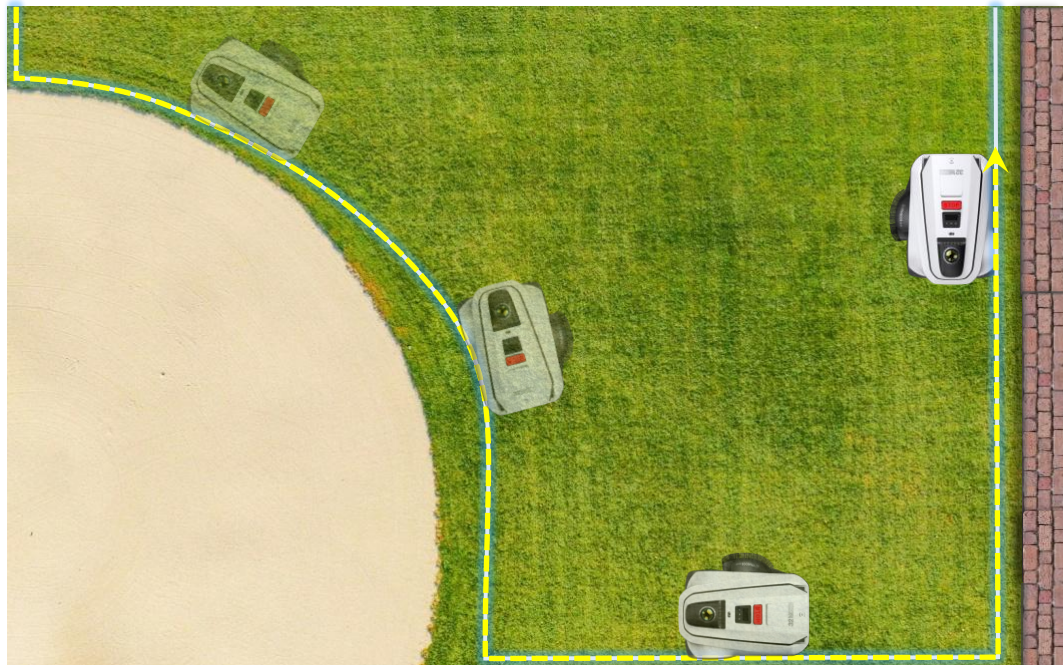


# Automatic Zero-Edge Cutting – Edge Strategies

You can choose an appropriate edge mowing strategy for each section, so that each edge is covered as thoroughly as possible.

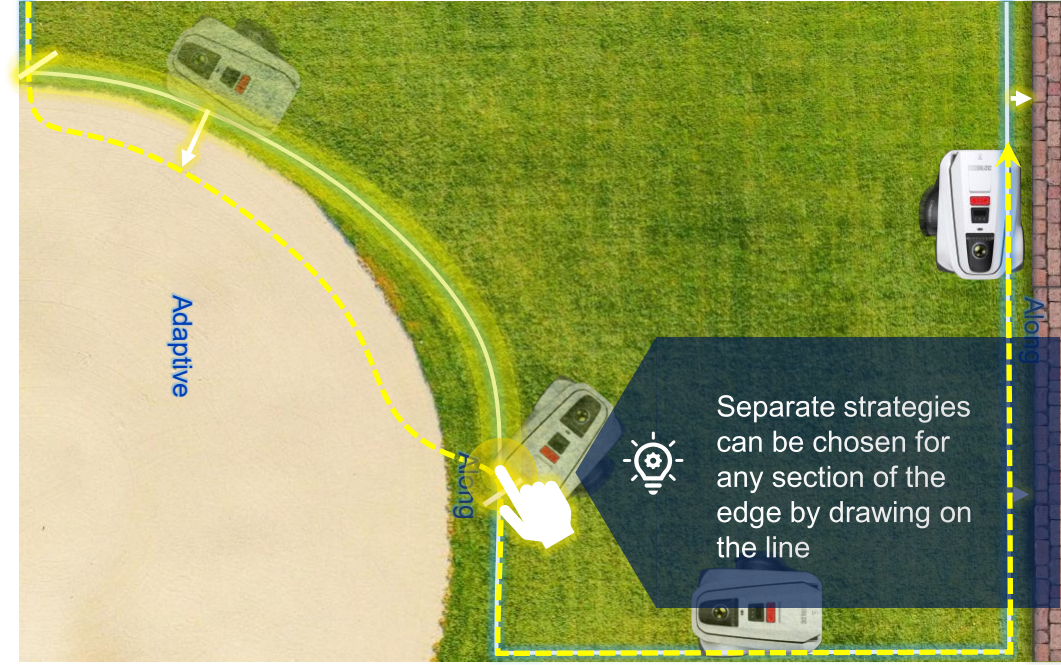
## Along

Cut along the exact edge of map



## Adaptive

Cut as close as possible to the edge adaptively, may extend beyond the edge of map.



A3000 LiDAR  
PRO

A1600 LiDAR  
PRO

O1200 LiDAR  
PRO

O800 RTK

O600 RTK

# HoloScope™ 360

## Dual-LiDAR Navigation system

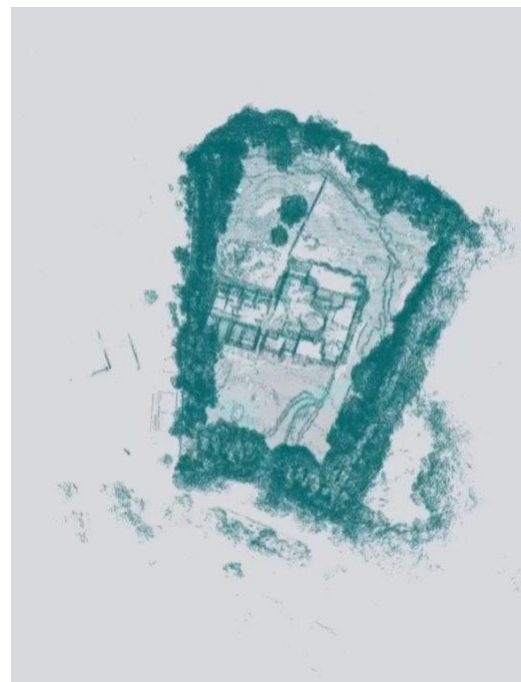
Experience never-lost localization and instant setup with 360° holographic mapping

3cm | 1.2inch  
Accuracy of Positioning

60m | 197ft  
Range of Measurement

Instant Setup  
No Boundary Wire | No External Antenna

No Disturbance  
By Shades or Roofs



Holographic map created by LiDAR (not visible to users)

All new models of GOAT A & O Series PRO are equipped with dual LiDAR modules, one is 360° LiDAR, the other is solid-state 3D-ToF LiDAR.

Compared to conventional RTK localization, 360° LiDAR can independently scan surroundings in real time and build a 3D holographic map of the entire garden. This technology of localization is never interfered by environmental elements (e.g. tree shadings, roof coverage, high walls...) and requires no boundary wire or external antenna to set up.

With a measurement range of up to 60m and centimeter-level localization accuracy, HoloScope 360 ensures stable and accurate navigation for the GOAT, even in extra-large gardens.

\* It has a range of measurement at about 70m. For better performance, it is recommended to have at least some obvious references within 60m on at least two sides. A completely barren area (like Golf field or Stadium) shall work better with the RTK version.

# LiDAR-Enhanced RTK Navigation, Quick Connection, Stable Navigation



A3000 LiDAR  
PRO

A1600 LiDAR  
PRO

O1200 LiDAR  
PRO

O800 RTK

O600 RTK

For models with RTK module, global positioning satellite signals are used to accurately locate the robot and keep monitoring the position to create a map.

Mowing tasks will intelligently plan path and cut logically based on the positioning info received by RTK module.

The accuracy is about 2~3cm (0.8~1.2inch). With augmented RTK bands, the new GOATs can receive at most 40 satellites at one time and as a 30% increase in anti-disturbance performance.

A Solid-state LiDAR (3D-ToF) and a fish-eye camera help the robot to find distance and keep navigating stably when the satellite signals is shielded under gigantic tree shades or roofs to ensure a smooth, continuous work.

## 40 Satellites

At one time (maximum)

## Orbital Base Station

Available to connect to

30%↑

In Anti-Disturbance performance

## Less Disturbance

By shades or roofs

## Enhanced by Solid-state LiDAR

For close-distance measurement

# LELS™:

## LiDAR-Enhanced RTK Navigation, Quick Connection, Stable Navigation

### Installation Conditions

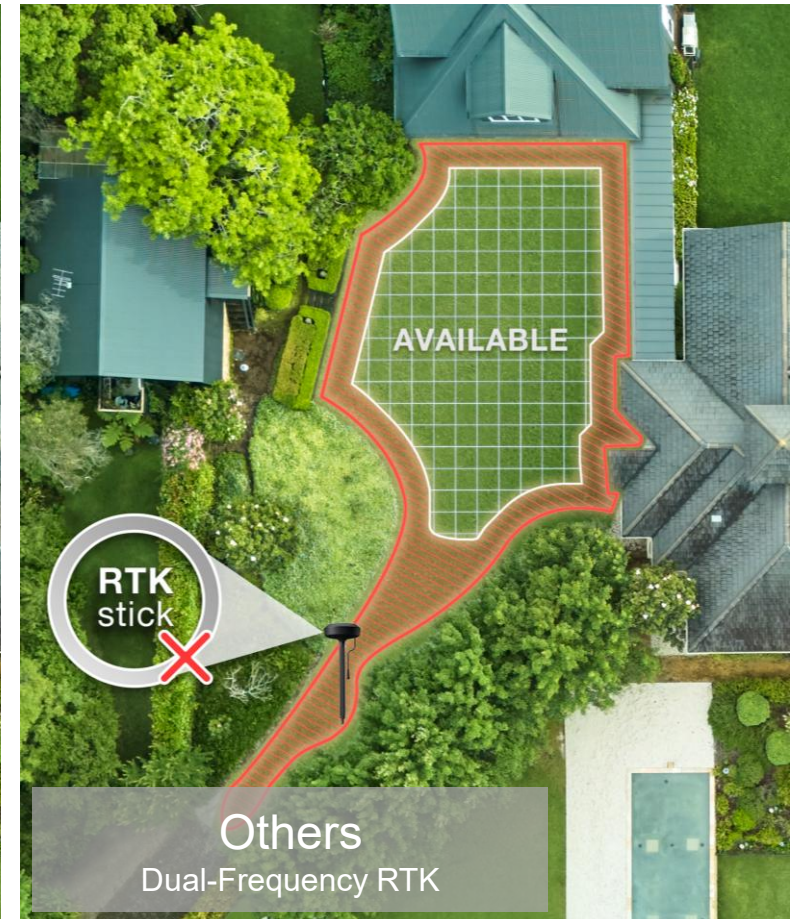
#### Much Easier Installation Limits:

As long as the RTK reference station has at least 2m | 6.6ft distance to the wall or other shields, the connection shall be made quickly. (Normal RTK reference station has to keep a 5m | 16.4ft or more distance to ensure a connection)

#### Much Quicker Awakening Speed:

With more signal bands and satellite amount supported, the RTK can be activated in about 75% less time (GOAT: 15~30s, Segway i Series: 120~240s, 300% increase in connection speed) on starting or on reconnecting to the RTK system after leaving a shaded area.

It ensures not only a quick launch but also a stable navigation during the entire mowing tasks.



A3000 LiDAR  
PRO

A1600 LiDAR  
PRO

O1200 LiDAR  
PRO

O800 RTK

O600 RTK

New Entry Level O Series RTK  
A real entry-level smart robotic mower

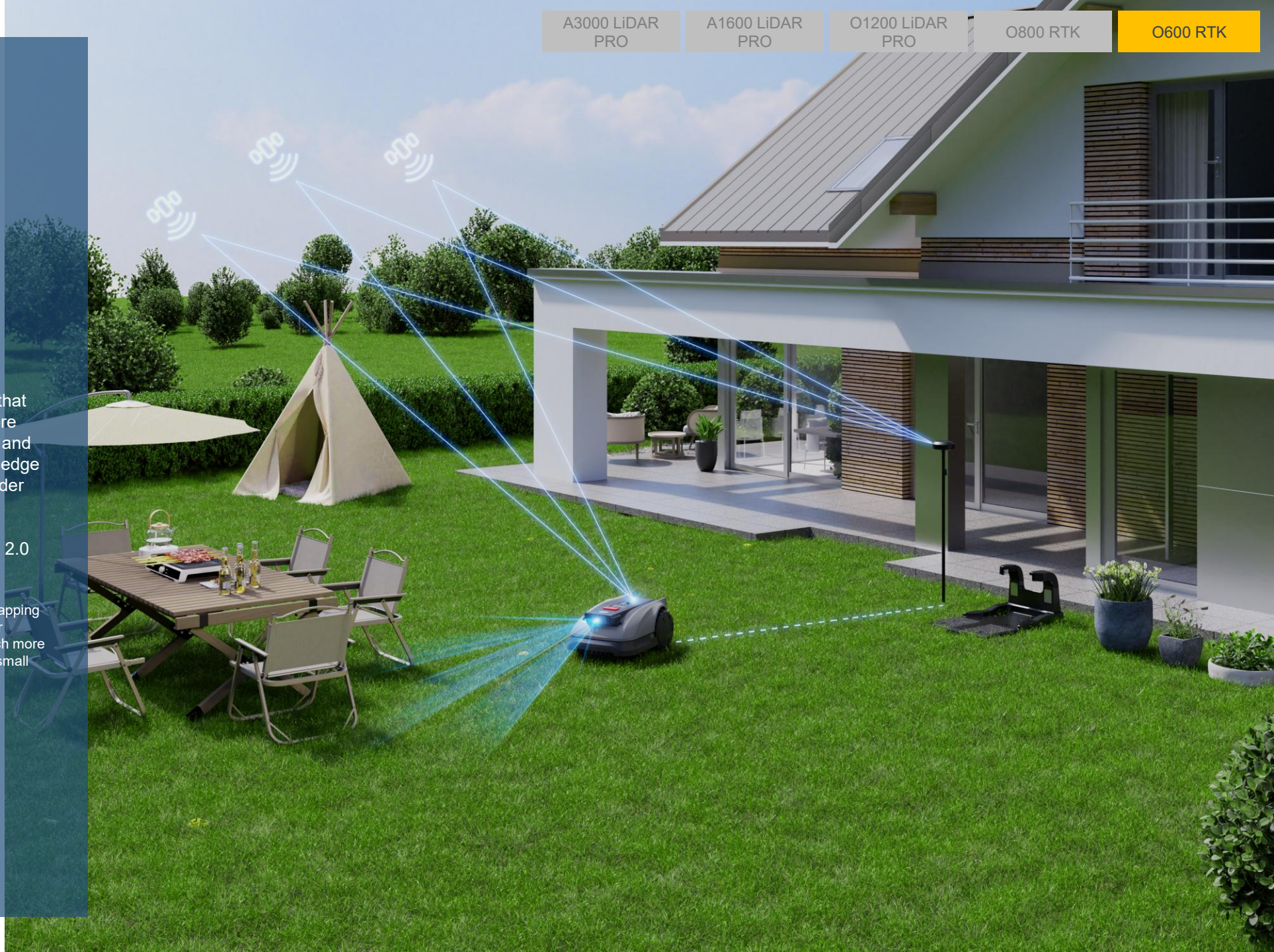
## TrueMapping 2.0

### Multi-Fusion RTK Navigation

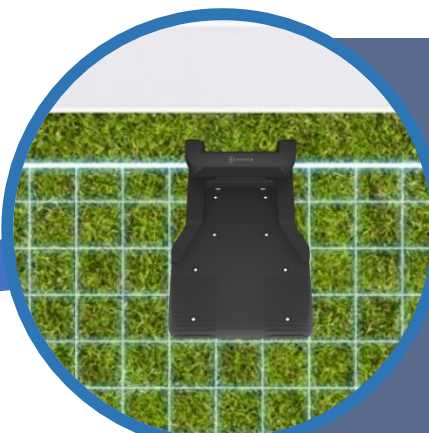
TrueMapping is a complex navigation system that have advanced multi-frequency RTK as the core localization technology. Fused with AI camera and Gyroscope, it is able to control the distance to edge in real time, and keep the navigation stable under shading or along high wall.

This enhanced comprehensive navigation experience is what differentiates TrueMapping 2.0 from other RTK navigation systems.

\* Compared to LELS on our premium RTK series, TrueMapping 2.0 does not apply the 3D-ToF LiDAR, which is helpful for accurate close distance measurement, but it offers a much more economic solution with an experience similar to LELS in small areas.



# Optional Second Charging Station



Set a second charging station for the front yard.

Users may purchase an extra charging station and connect it with the GOAT. GOAT is able to choose the closest one or the only accessible one for charging.



It is recommended to set up a second station in an area that is often separated and inaccessible from the main area (e.g. the front yard)

# GOAT LINE-UP in 2026: Multi-platform for Maximally Solving the Users' Pain Points and Keeping Product Competitive

## GOAT A Series

Large Villas

## GOAT O Series

Small & Middle-Sized garden

A3000 LiDAR PRO

A1600 LiDAR PRO

O1200 LiDAR PRO

O800 RTK

O600 RTK



3D LiDAR		RTK (Satellite-based Positioning)
Setup-free		Wire-Free setup
TruEdge Trimmer (Cutting to 0 edge in various scenarios)		Cutting to edge in scenarios excl. "barriers" & "cliffs" scenarios
Powerful cutting	Normal cutting	
Ultra Efficiency (high speed, dual blade-disc)	Good efficiency	Normal efficiency
Super-fast charge and ultra efficiency for large area	Fast charge and good efficiency for small and medium area	
Suitable for all types of grass	Suitable for short and medium height grass	
Normal passage ability	Excellent narrow path passage	

# GOAT LINE-UP in 2026: Multi-platform for Maximally Solving the Users' Pain Points and Keeping Product Competitive

## GOAT A Series

Large Villas

## GOAT O Series

Small & Middle-Sized garden

	A3000 LiDAR PRO	A1600 LiDAR PRO	O1200 LiDAR PRO	O800 RTK	O600 RTK
Recommended area	3000m <sup>2</sup>	1600m <sup>2</sup>	1200m <sup>2</sup>	500m <sup>2</sup>	600m <sup>2</sup>
Navigation	👍 <b>LELS<sub>1</sub> Pro (Dual LiDAR+ Vision)</b>	👍 <b>LELS<sub>1</sub> Pro (Dual LiDAR+ Vision)</b>	👍 <b>LELS<sub>1</sub> Pro (Dual LiDAR+ Vision)</b>	RTK + Vision	RTK + Vision
Obstacle avoidance	👍 <b>AIVI 3D Dual LiDAR + Vision</b>	👍 <b>AIVI 3D Dual LiDAR + Vision</b>	👍 <b>AIVI 3D Dual LiDAR + Vision</b>	👍 <b>AIVI 3D LiDAR + Vision</b>	Vision
Blade discs	👍 <b>Dual</b>	👍 <b>Dual</b>	Single	Single	Single
# of blades	👍 <b>6</b>	👍 <b>6</b>	3	3	3
Cutting width	👍 <b>330mm</b>	👍 <b>330mm</b>	220cm	220cm	190mm
Cutting height adjustment	Electric (30mm-👍 <b>90mm</b> )	Electric (30mm-👍 <b>90mm</b> )	Electric (30mm- <b>80mm</b> )	Manual (30mm- <b>80mm</b> )	Manual (30mm-80mm)
Edge cutting	👍 <b>0cm (Automatic trimmer) + Riding on boundary</b>	👍 <b>0cm (Automatic trimmer) + Riding on boundary</b>	👍 <b>0cm (Automatic trimmer) + Riding on boundary</b>	<b>Riding on boundary</b>	<b>Riding on boundary</b>
Platform Voltage	👍 <b>32V</b>	👍 <b>32V</b>	<b>18V</b>	<b>18V</b>	<b>18V</b>
Slope climbing	50% (27°)	50% (27°)	<b>45% (24°)</b>	<b>45% (24°)</b>	<b>45% (24°)</b>
Narrow Path Passage	85cm	85cm	👍 <b>75cm</b>	👍 <b>75cm</b>	👍 <b>75cm</b>

# Thanks!

Our Mission: Robotics for All